

October 2011 – Koru Update

Meaning of Name: "Koru" New beginnings



protecting a resource

History:

Koru originated from egg # NG-28. This is the first and only egg of the second clutch nest from the 2010/2011 breeding season. Niggle's second nest was in a natural cavity named "Poddy", possibly a kiwi dug burrow?. Burrow occupation began on 14th December 2010. The egg was taken on the morning of 11th February 2011, and transported to 'Kiwi Encounter' at Rainbow Springs. The egg was aged at 72 days upon arrival at Kiwi Encounter, and hatched on 17th February 2011.

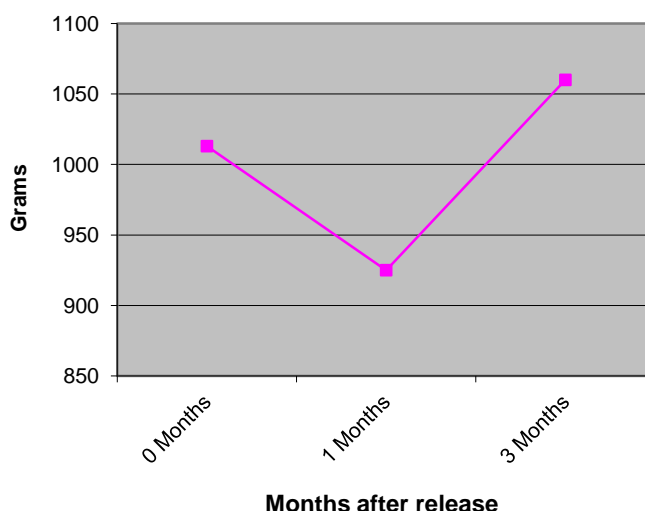
Dispersal – Tracking History:

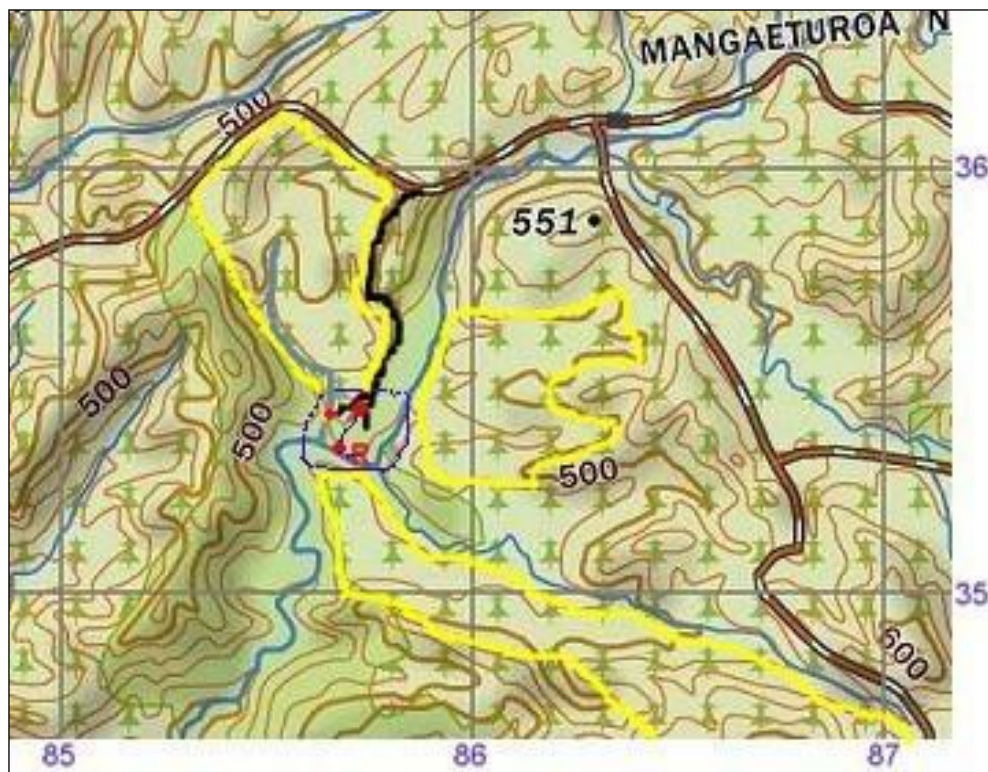
Since 19th August Koru has been tracked 6 times and pin pointed on all of those occasions. He has remained in a large slash pile around the plateau just north of his release site, in an area of clear-fell. In the last 2 weeks he has moved to the North West beside a branch of the Huikumū Stream in a native riparian strip along the stream. He uses good natural cavity burrows.

Health checks:

Koru underwent his second health check on 20th Oct. He had gained 135grams, which is excellent, as he is now above release weight. His bill is now 68.8mm, and has grown 5mm since August. He appears still quite small and felt lean along his spine, but was very feisty, bright eyed and alert, and we are pleased with his progress and burrow choices. He will get a new adult transmitter in November and hopefully will have gained even more weight.

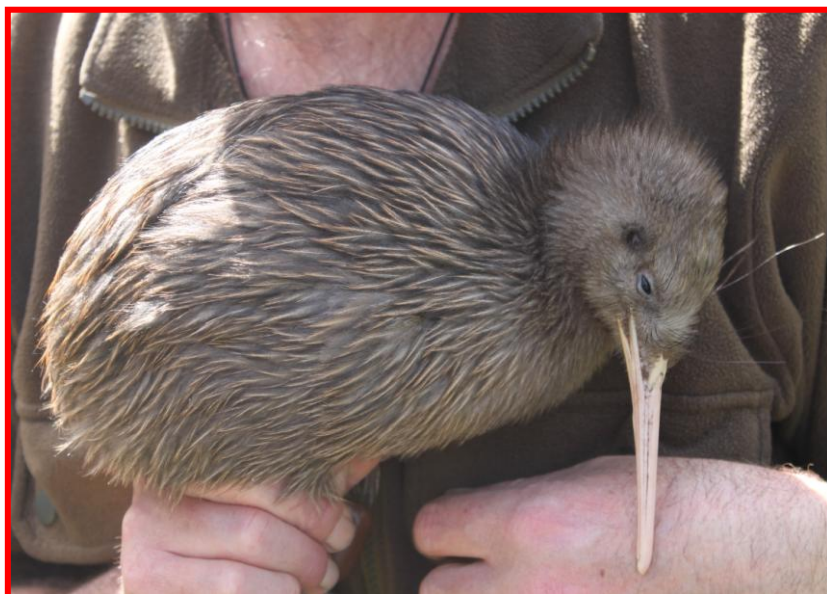
Koru Growth Rate





Key:

- R Release Point
- Burrow positions
- Current area of use
- Clear felled areas



Koru 20th October 2011